

NF SERIES



FIRE PUMPS



50Hz

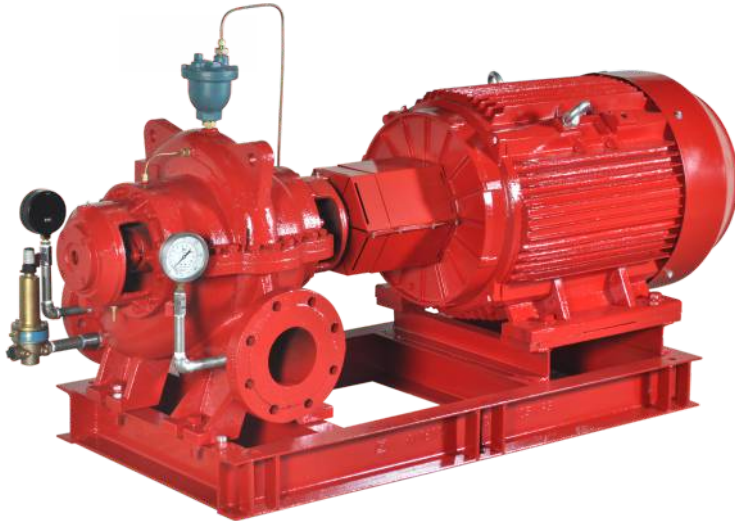
PRODUCT CATALOGUE



www.northam-inc.com

This page is intentionally left blank.

INTRODUCTION



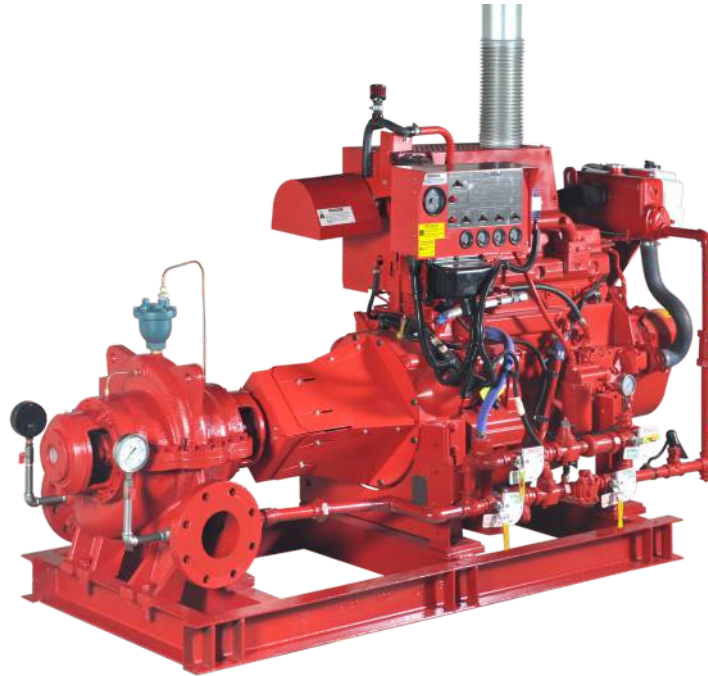
- ▶ NORTHAM offers FNHC series state-of-art pumps with diesel engine or electric motor driven, horizontal split case pump.
- ▶ These pumps are typically used in fire-fighting applications for supplying water to fire hose reels, fire hydrants or sprinkler systems.
- ▶ Pumps have a discharge range from 450 to 3000 Usgpm and the head range from 4.2 to 23 bar.
- ▶ These fire pumps meet or exceed the requirements of NFPA20.

These fire pumps typically consist of the following equipments:

- ▶ Horizontal Split Case pump.
 - ▶ Electric motor or Diesel Engine
 - ▶ Cooling system for Diesel Engine
 - ▶ Fuel system for Diesel Engine
 - ▶ Battery for Diesel Engine electric start
 - ▶ Exhaust system for Diesel Engine
 - ▶ Diesel Engine / Electric Motor Fire pump controller
 - ▶ Suction and Discharge pressure gauges
 - ▶ Air relief valve
 - ▶ Casing Relief Valve for Motor Fire Pump
 - ▶ Base frame
-
- ▶ All above equipments except fuel supply tank and fire pump controller are mounted on a common base frame.
 - ▶ NORTHAM can also supply Packaged fire pumping system with all required accessories ready for site installation.

HORIZONTAL SPLIT CASE FIRE PUMPS

APPLICATIONS



The FNHC fire pumps are used in fire-fighting applications for supplying water to fire hose reels, fire hydrants or sprinkler systems in areas which are prone to the hazards of fire.

The typical applications are as follow:

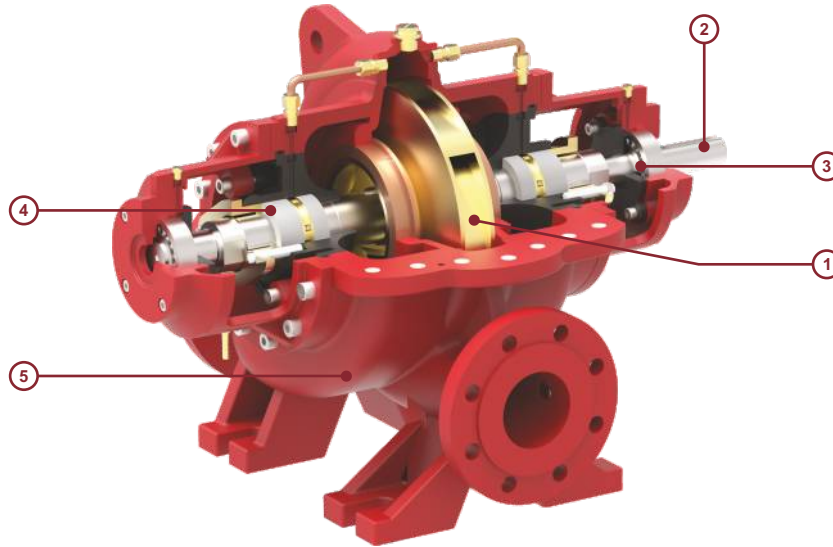
- ▶ Commercial complexes and high rise buildings
- ▶ Petrochemical industries and Gas plants
- ▶ Oil and Gas on-shore & off-shore platforms
- ▶ Oil terminals
- ▶ Airports and ports
- ▶ Jettie
- ▶ Marine applications
- ▶ Power stations and transformer stations
- ▶ Chemical industries
- ▶ Manufacturing plants
- ▶ Fire-work industries
- ▶ Warehouses/godowns.

FEATURES & BENEFITS

FNHC fire pumps offers all features & benefits as mentioned in our NHC standard pump series data booklet. Following are the additional features & benefits offered by :

- ▶ State-of-the-art fire pumping system
- ▶ UL listed/FM approved/NFPA-20 design
- ▶ Diesel engine as well as electric motor driven pump
- ▶ Rugged construction
- ▶ Liberal water passages
- ▶ Automatic air relief valve
- ▶ Efficient operation
- ▶ Lower initial cost
- ▶ Simplified piping cost
- ▶ Simplified piping design
- ▶ Suitable for space saving installation systems and retrofit applications
- ▶ Easy access to all working parts
- ▶ Ease of maintenance
- ▶ Single source unit responsibility

GENERAL PUMP FEATURES



1 - Impeller & Casing

- ▶ Minimal axial thrust due to double-entry impeller.
- ▶ Impeller is dynamically balanced to grade G6.3 balance quality in accordance to ISO 1940-1.
- ▶ Impeller & Casing are designed using state of art CFD tools to ensure optimal performance.

2 - Shaft

- ▶ Heavy duty stainless steel shaft completely sealed and dry for zero corrosion.
- ▶ Short and rigid with negligible vibrations.
- ▶ Replaceable shaft protecting sleeves.
- ▶ No threads exposed to pump medium, long operating life and no corrosion.
- ▶ Adjustment-free assembly.

3 - Bearing

- ▶ Heavy duty and grease lubricated antifriction bearings for long service life.
- ▶ Open gland, enough space for service activities.

4 - Seal

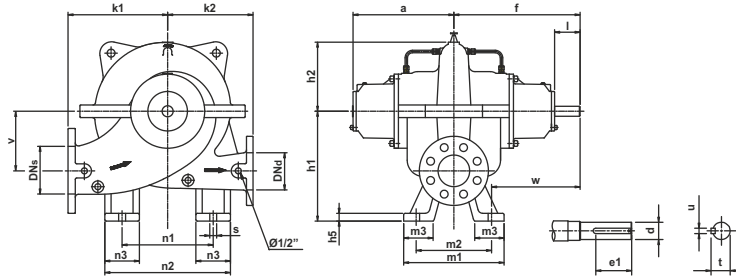
- ▶ Asbestos - free, soft packed stuffing boxes.

5 - Casing

- ▶ In-line axially split design which permits removal of the complete Impeller Shaft Assembly without removing the pipes & motor.
- ▶ Short distance between bearings.
- ▶ Leak-tight due to compact joint flange with long Pre-stressed bolts.
- ▶ Counter-rotation possible with similar parts.
- ▶ Easy mounting self-aligning upper casing.
- ▶ Flange drilled as per ASME B16.42 class 300.
- ▶ Smooth surface inside & CED coated for superior corrosion protection.
- ▶ Replaceable wear ring protect the casing and the impeller running clearances.
- ▶ Heavy duty casing design for high working pressure.

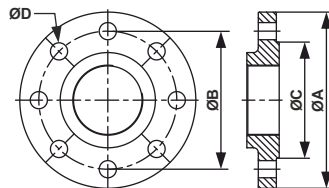
HORIZONTAL SPLIT CASE FIRE PUMPS

DIMENSIONS



Model	DNs	DNd	k1	k2	v	n1	n2	n3	a	f	h1	h2	h5	s	w	m1	m2	m3	d	l	e1	u	t
NFH 050-040-100	5	12	12.20	9.84	6.69	9.84	13.78	3.94	12.72	15.83	12.60	7.83	0.98	0.87	11.10	12.60	9.45	3.74	1.26	3.19	2.56	0.39	0.039
NFH 050-040-160	5	15	14.76	12.80	8.27	14.57	19.29	4.72	13.15	17.09	14.37	10.24	0.98	0.87	12.36	12.60	9.45	3.43	1.50	4.02	3.35	0.39	0.039
NFH 060-050-125	6	14	13.78	11.81	7.68	11.81	17.32	5.51	13.11	17.09	14.76	9.61	0.98	0.87	12.17	13.78	9.84	3.90	1.50	4.02	3.35	0.39	0.039
NFH 080-060-100	8	15	15.16	12.80	7.48	13.78	19.29	5.51	13.94	17.76	15.35	9.17	0.98	0.94	11.73	14.57	12.01	3.15	1.50	3.82	3.35	0.39	0.039
NFH 080-060-120	8	16	15.75	14.76	7.87	12.99	17.91	4.92	13.39	17.24	15.94	9.06	0.98	0.94	10.94	15.35	12.60	3.15	1.50	3.74	3.54	0.39	0.039
NFH 100-080-100	10	18	17.72	12.80	11.02	14.17	19.49	5.31	15.83	19.65	20.67	11.06	1.10	0.94	11.77	19.69	15.75	3.78	1.50	3.82	3.35	0.39	0.043
NFH 100-080-120	10	17	16.73	15.75	7.87	16.93	22.44	5.51	14.76	18.94	17.13	9.49	1.10	0.94	11.85	18.11	14.174	1.89	4.17	4.02	0.55	0.043	
NFH 100-080-125	10	18	17.72	14.76	9.25	16.93	22.44	5.51	16.06	20.20	18.31	11.30	1.10	0.94	13.11	18.11	14.174	1.89	4.15	3.66	0.55	0.043	
NFH 100-080-160	10	19	19.09	16.54	9.06	18.11	23.78	5.67	16.10	20.28	18.31	12.32	1.10	0.94	14.37	15.75	11.81	3.82	2.17	4.17	3.70	0.63	0.043
NFH 100-080-255	10	24	23.62	23.62	12.80	25.59	31.89	6.60	17.09	22.44	22.64	15.94	1.26	0.94	15.04	17.83	14.764	6.92	2.95	5.31	5.31	0.79	0.050
NFH 120-100-200	12	24	23.62	23.64	10.83	25.59	32.87	7.28	19.49	24.96	21.65	14.92	1.18	1.10	16.69	20.47	16.544	7.23	3.35	5.51	5.12	0.87	0.047
NFH 120-100-255	12	28	27.56	27.56	12.62	33.86	40.16	6.30	18.03	23.50	23.23	16.34	1.26	0.94	16.42	18.11	14.174	7.23	3.35	5.51	5.31	0.87	0.050

FLANGE DIMENSIONS

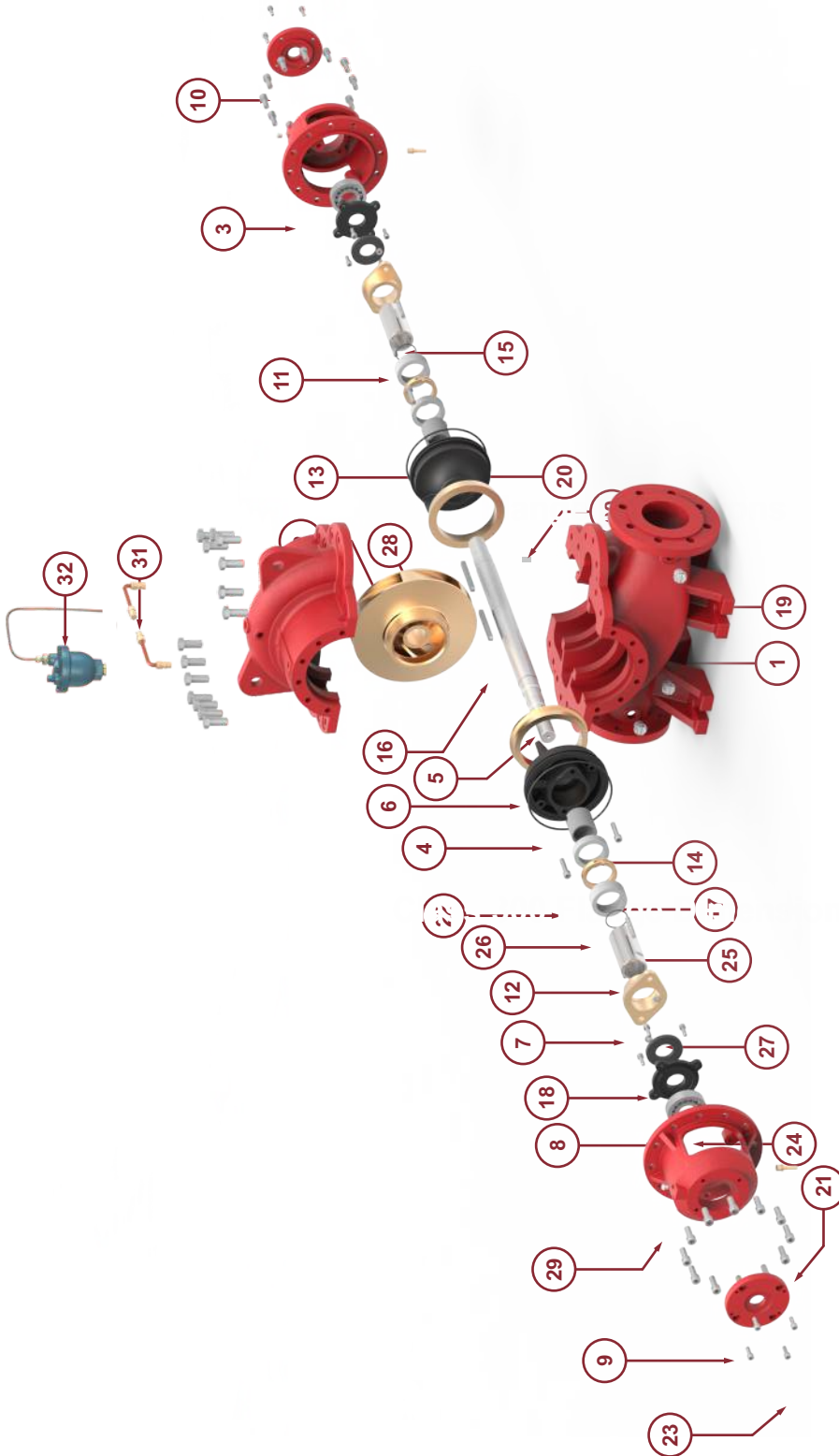


CLASS 300 FLANGE DIMENSIONS

Model	Suction				Discharge			
	ØA	ØB	ØC	ØD x Nos. of holes	ØA	ØB	ØC	ØD x Nos. of holes
NFH 050-040-100	11.02	9.25	8.31	Ø7/8" x 8	10.04	7.87	6.93	Ø7/8" x 8
NFH 050-040-160	11.02	9.25	8.31	Ø7/8" x 8	10.04	7.87	6.93	Ø7/8" x 8
NFH 060-050-125	12.60	10.63	9.69	Ø7/8" x 12	11.02	9.25	8.31	Ø7/8" x 8
NFH 080-060-100	14.96	12.99	11.93	Ø1" x 12	12.60	10.63	9.69	Ø7/8" x 12
NFH 080-060-120	14.96	12.99	11.93	Ø1" x 12	12.60	10.63	9.69	Ø7/8" x 12
NFH 100-080-120	17.52	15.24	14.06	Ø1-1/8" x 16	14.96	12.99	11.93	Ø1" x 12
NFH 100-080-120	17.52	15.24	14.06	Ø1-1/8" x 16	14.96	12.99	11.93	Ø1" x 12
NFH 100-080-125	17.52	15.24	14.06	Ø1-1/8" x 16	14.96	12.99	11.93	Ø1" x 12
NFH 100-080-160	17.52	15.24	14.06	Ø1-1/8" x 16	14.96	12.99	11.93	Ø1" x 12
NFH 100-080-255	17.52	15.24	14.06	Ø1-1/8" x 16	14.96	12.99	11.93	Ø1" x 12
NFH 120-100-200	20.47	17.76	16.46	Ø1-1/4" x 16	17.52	15.24	13.78	Ø1-1/8" x 16
NFH 120-100-255	20.47	17.76	16.46	Ø1-1/4" x 16	17.52	15.24	13.78	Ø1-1/8" x 16

HORIZONTAL SPLIT CASE FIRE PUMPS

EXPLODED VIEW



Part no.	Part name	Part no.	Part name	Part no.	Part name	Part no.	Part name
1	Split casing	11	R.H. Sleeve	21	Cap screw with spring washer	31	Hose pipe
2	Impeller	12	L.H. Sleeve	22	Cap screw	32	Automatic Air Release Valve
3	Bearing housing	13	Shaft sleeve	23	Cap screw		
4	Back cover	14	Shaft sleeve	24	Ball bearing		
5	Shaft	15	Stud	25	'O' ring		
6	Wear ring	16	Key	26	Graphite packing		
7	Gland	17	Lantern ring	27	Hex nut		
8	Internal bearing cover	18	Water thrower	28	Key		
9	External bearing cover	19	Drain plug	29	Grease nipple		
10	External bearing cover(drive)	20	'O' ring	30	Dowel pin		

APPROVED FIRE PUMP MODELS WITH RATING

RATED CAPACITY- 400 US GPM

Sr. No.	Pump Model	UL Listed Pressure		FM Approved Pressure		Rated Speed (rpm)	Suction Inlet Dia. (inch)	Discharge Outlet Dia. (inch)	Stage(s)
		(psi)	(bar)	(psi)	(bar)				
1	NFH 050-040-160	245-336	16.8-23.16	245-335	16.89-23.09	2900	5	4	1

RATED CAPACITY- 450 US GPM

Sr. No.	Pump Model	UL Listed Pressure		FM Approved Pressure		Rated Speed (rpm)	Suction Inlet Dia. (inch)	Discharge Outlet Dia. (inch)	Stage(s)
		(psi)	(bar)	(psi)	(bar)				
1	NFH 050-040-100	71-131	4.89-9	75-136	5.1-9.3	2900	5	4	1
2	NFH 050-040-160	244-335	16.8-23.0	244-333	16.82-22.95	2900	5	4	1

RATED CAPACITY- 500 US GPM

Sr. No.	Pump Model	UL Listed Pressure		FM Approved Pressure		Rated Speed (rpm)	Suction Inlet Dia. (inch)	Discharge Outlet Dia. (inch)	Stage(s)
		(psi)	(bar)	(psi)	(bar)				
1	NFH 050-040-100	71-131	4.89-9	74-135	5.10-9.3	2900	5	4	1
2	NFH 050-040-160	243-334	16.75-23.0	243-332	16.75-22.89	2900	5	4	1
3	NFH 060-050-125	131-214	9-14.75	131-214	9-14.75	2900	6	5	1

RATED CAPACITY- 750 US GPM

Sr. No.	Pump Model	UL Listed Pressure		FM Approved Pressure		Rated Speed (rpm)	Suction Inlet Dia. (inch)	Discharge Outlet Dia. (inch)	Stage(s)
		(psi)	(bar)	(psi)	(bar)				
1	NFH 050-040-100	65-130	4.4-8.96	66-132	4.5-9.10	2900	5	4	1
2	NFH 050-040-160	236-323	16.27-22.27	234-321	16.13-22.13	2900	5	4	1
3	NFH 060-050-125	129-213	8.8-14.68	129-212	8.8-14.61	2900	6	5	1
4	NFH 080-060-100	82-143	5.65-9.86	82-142	5.65-9.79	2900	8	6	1
5	NFH 080-060-120	141-201	9.72-13.86	140-202	9.65-13.92	2900	8	6	1

RATED CAPACITY- 1000 US GPM

Sr. No.	Pump Model	UL Listed Pressure		FM Approved Pressure		Rated Speed (rpm)	Suction Inlet Dia. (inch)	Discharge Outlet Dia. (inch)	Stage(s)
		(psi)	(bar)	(psi)	(bar)				
1	NFH 060-050-125	127-210	8.75-14.4	126-209	8.68-14.4	2900	6	5	1
2	NFH 080-060-100	80-142	5.51-9.79	79-141	5.44-9.72	2900	8	6	1
3	NFH 080-060-120	141-201	9.72-13.86	140-201	9.65-13.86	2900	8	6	1
4	NFH 100-080-100	84-139	5.79-9.58	84-136	5.79-9.37	2900	10	8	1
5	NFH 100-080-125	114-212	7.86-14.62	115-211	7.92-14.54	2900	10	8	1

APPROVED FIRE PUMP MODELS WITH RATING

RATED CAPACITY- 1250 US GPM

Sr. No.	Pump Model	UL Listed Pressure		FM Approved Pressure		Rated Speed (rpm)	Suction Inlet Dia. (inch)	Discharge Outlet Dia. (inch)	Stage(s)
		(psi)	(bar)	(psi)	(bar)				
1	NFH 080-060-100	78-140	5.37-9.65	77-140	5.30 -9.65	2900	8	6	1
2	NFH 060-050-125	121-205	8.34-14.13	119-204	8.20-14	2900	6	5	1
3	NFH 080-060-120	136-199	9.38-13.72	137-199	9.44-13.72	2900	8	6	1
4	NFH 100-080-100	83-137	5.72-9.44	83-135	5.72-9.30	2900	10	8	1
5	NFH 100-080-125	114-210	7.86-14.47	114-211	7.86-14.54	2900	10	8	1

RATED CAPACITY- 1500 US GPM

Sr. No.	Pump Model	UL Listed Pressure		FM Approved Pressure		Rated Speed (rpm)	Suction Inlet Dia. (inch)	Discharge Outlet Dia. (inch)	Stage(s)
		(psi)	(bar)	(psi)	(bar)				
1	NFH 080-060-100	75-139	5.17-9.58	73-137	5.03-9.44	2900	8	6	1
2	NFH 080-060-120	130-195	8.96-13.45	130-195	8.96-13.45	2900	8	6	1
3	NFH 100-080-100	82-136	5.62-9.37	82-133	5.62-9.17	2900	10	8	1
4	NFH 100-080-120	145-203	10.0-13.99	145-204	9.99-14.06	2900	10	8	1
5	NFH 100-080-125	113-210	7.7-14.4	113-209	7.79-14.41	2900	10	8	1
6	NFH 100-080-160	135-206	9.30-14.2	135-203	9.30-13.99	2350	10	8	1
7	NFH 100-080-255	184-245	12.6-16.8	185-244	12.75-16.82	1470	10	8	1

RATED CAPACITY- 2000 US GPM

Sr. No.	Pump Model	UL Listed Pressure		FM Approved Pressure		Rated Speed (rpm)	Suction Inlet Dia. (inch)	Discharge Outlet Dia. (inch)	Stage(s)
		(psi)	(bar)	(psi)	(bar)				
1	NFH 100-080-100	80-133	5.51-9.17	79-131	5.44-9.03	2900	10	8	1
2	NFH 100-080-120	140-200	9.65-13.79	140-201	9.65-13.85	2900	10	8	1
3	NFH 100-080-125	109-209	7.5-14.41	109-209	7.51-14.41	2900	10	8	1
4	NFH 100-080-125	72-133	4.96-9.17	70-131	4.82-9.03	2350	10	8	1
5	NFH 100-080-160	132-204	9.10-14.06	131-202	9.03-13.92	2350	10	8	1
6	NFH 100-080-255	180-242	12.4-16.6	180-241	12.41-16.61	1470	10	8	1
7	NFH 120-100-200	96-154	6.61-10.61	95-154	6.55-10.61	1470	12	10	1
8	NFH 120-100-255	156-226	10.75-15.58	154-225	10.61-15.51	1470	12	10	1

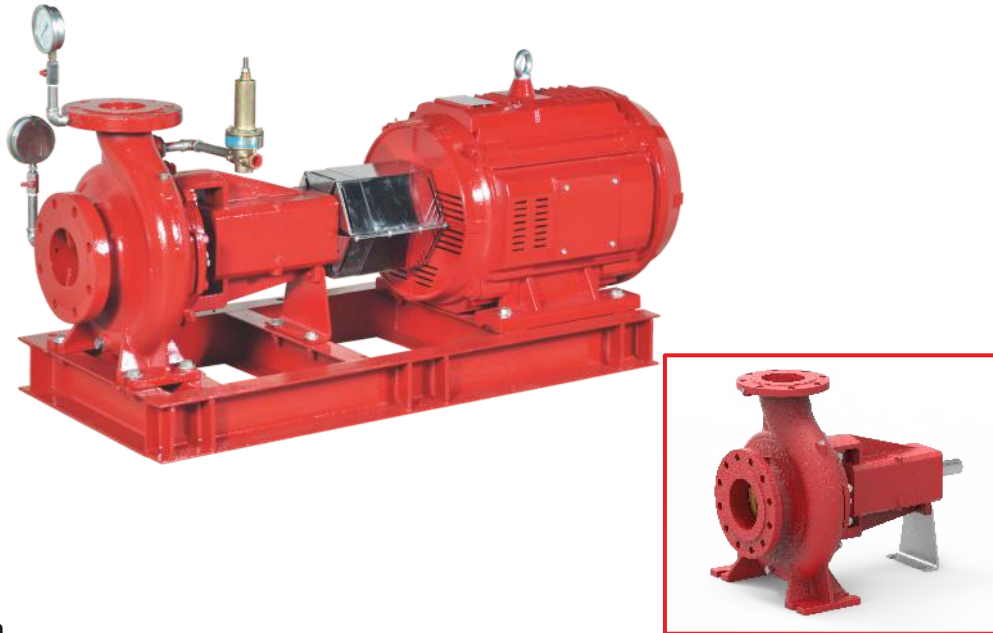
APPROVED FIRE PUMP MODELS WITH RATING

RATED CAPACITY- 2500 US GPM

Sr. No.	Pump Model	UL Listed Pressure		FM Approved Pressure		Rated Speed (rpm)	Suction Inlet Dia. (inch)	Discharge Outlet Dia. (inch)	Stage(s)
		(psi)	(bar)	(psi)	(bar)				
1	NFH 100-080-160	126-200	8.68-13.78	126-199	8.68-13.72	2350	10	8	1
2	NFH 120-100-200	93-152	6.4-10.4	93-152	6.41-10.48	1470	12	10	1
3	NFH 120-100-255	152-224	10.4-15.4	151-223	10.41-15.37	1470	12	10	.1

RATED CAPACITY- 3000 US GPM

Sr. No.	Pump Model	UL Listed Pressure		FM Approved Pressure		Rated Speed (rpm)	Suction Inlet Dia. (inch)	Discharge Outlet Dia. (inch)	Stage(s)
		(psi)	(bar)	(psi)	(bar)				
1	NFH 120-100-200	90-151	6.20-10.4	89-151	6.13-10.41	1470	12	10	1



Introduction

- ▶ NORTHAM offers FNBS series state-of-the-art fire pumps with diesel engine or electric motor driven, single-stage End-Suction pump.
- ▶ These pumps are typically used in fire-fighting applications for supplying water to fire hose reels, fire hydrants or sprinkler systems.
- ▶ Pumps have a discharge range from 50 to 1000 USgpm and the head range from 3.72 to 9.9 bar.
- ▶ These fire pumps meet or exceed the requirements of NFPA20.
- ▶ Installations of these pumps would ensure the safety of human life, buildings, and expensive equipments and plants. FNBS fire pump set shall be used only where a positive suction is provided as specified in NFPA20.

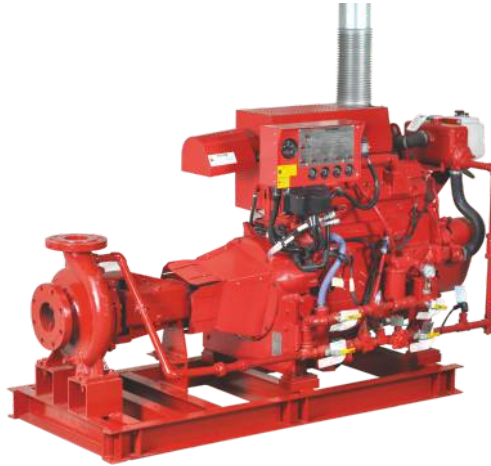
There fire pumps typically consists of the following equipments:

- ▶ Single-Stage End-Suction pump
- ▶ Electric motor or Diesel Engine
- ▶ Cooling system for Diesel Engine
- ▶ Fuel system for Diesel Engine
- ▶ Battery for Diesel Engine electric start
- ▶ Exhaust system for Diesel Engine
- ▶ Diesel Engine / Electric Motor Fire pump controller
- ▶ Suction and Discharge pressure gauges
- ▶ Casing Relief Valve for Motor Fire pump
- ▶ Base frame

All above equipments except fuel supply tank and fire pump controller are mounted on a common base frame. NORTHAM can also supply packaged fire pumping system with all required accessories ready for sit installation.

END SUCTION FIRE PUMPS

APPLICATIONS



The FNBS fire pumpsets are used in small capacity, diesel engine or motor driven fire-fighting applications for supplying water to fire hose reels, fire hydrants or sprinkler systems in areas which are prone to the hazards of fire.

The typical applications are as follow:

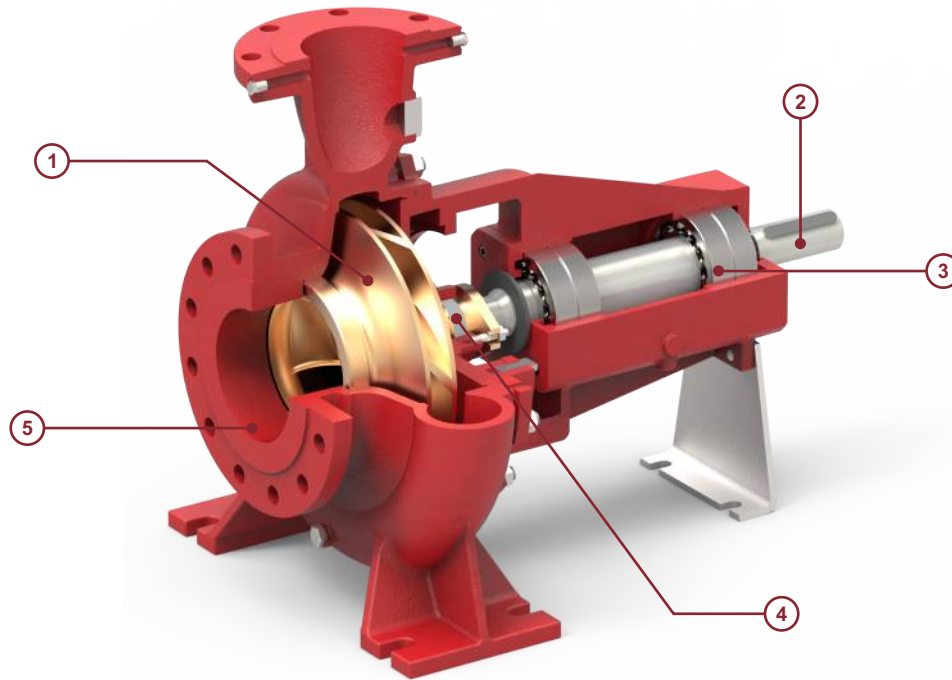
- ▶ Commercial complexes & high rise buildings
- ▶ Petrochemical industries and Gas plants
- ▶ Airports and ports
- ▶ Jetties
- ▶ Marine applications
- ▶ Power stations and transformer stations
- ▶ Chemical industries
- ▶ Manufacturing plants
- ▶ Fire-work industries
- ▶ Warehouses / godowns

FEATURES & BENEFITS

FNBS fire pumpset offers all the features & benefits as mentioned in our NBS standard pump series data booklet.

Following are the additional features & benefits offered by these pumpsets

- ▶ State-of-the-art design fire pumping system.
- ▶ NFPA-20 design
- ▶ Compact diesel engine driven pump package
- ▶ Rugged construction
- ▶ More economical than Horizontal Split Case diesel fire pump packages
- ▶ Back pull-out design which simplifies inspection and maintenance without disturbing pipe work
- ▶ The pump impellers are dynamically balanced to grade 6.3 of ISO 1940-1
- ▶ Efficient operation
- ▶ Lower initial cost
- ▶ Reduced installation time and cost
- ▶ Easy access to all working parts
- ▶ Ease of maintenance
- ▶ Single source unit responsibility.



1 - Impeller & Casing

- ▶ Impeller is dynamically balanced to grade G6.3 balance quality in accordance to ISO 1940-1.
- ▶ Impeller & Casing are designed using state of art CFD tools to ensure optimal performance.

2 - Shaft

- ▶ Heavy duty stainless steel shaft completely sealed and dry for zero corrosion.
- ▶ Short and rigid with negligible vibrations.
- ▶ Replaceable shaft protecting sleeves.
- ▶ No threads exposed to pump medium, long operating life and no corrosion.
- ▶ Adjustment-free assembly.

3 - Bearing

- ▶ Heavy duty and permanently grease lubricated antifriction bearings for long service life.
- ▶ Open gland, enough space for service activities.

4 - Seal

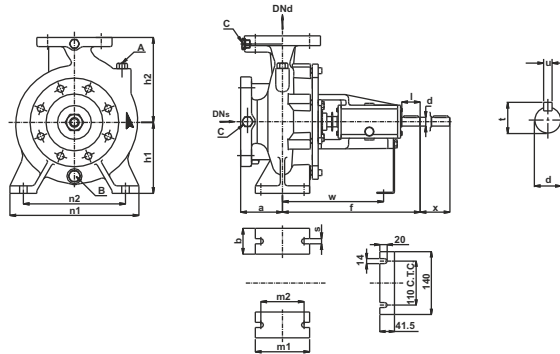
- ▶ Asbestos - free, soft packed stuffing boxes.

5 - Casing

- ▶ End Suction backpullout design permits maintenance of the pump without removing the pipes.
- ▶ Rugged Ball Bearings on Drive as well as Non Drive end.
- ▶ Flange drilled as per ASME B16.42 class 300.
- ▶ Smooth surface inside & CED coated for superior corrosion protection.
- ▶ Replaceable wear ring protect the casing and the impeller running clearances.
- ▶ Heavy duty casing design for high working pressure.

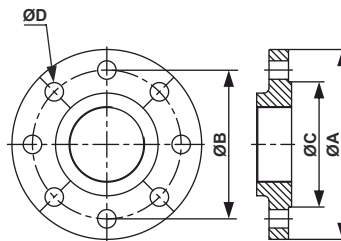
END SUCTION FIRE PUMPS

DIMENSIONS



Model	DN _s	DN _d	a	b	d.k6	f	h1	h2	l	m1	m2	n1	n2	s	t	u	w	x	A	B	C
NFE 025-015-100	3	40	4.0	2.56	0.94	14.17	7.09	8.86	1.97	4.92	3.74	12.60	9.84	0.55	1.06	0.31	10.24	3.94	Ø3/8"	Ø1/2"	Ø1/4"
NFE 030-025-100	3	65	4.0	3.15	1.65	18.98	7.87	9.84	3.15	6.30	4.72	14.17	11.02	0.71	1.77	0.47	13.39	5.51	Ø3/8"	Ø1/2"	Ø1/4"
NFE 050-040-100	5	100	5.5	3.15	1.65	20.75	8.86	11.02	4.33	6.30	4.72	15.75	12.40	0.71	1.77	0.47	14.17	5.51	Ø3/8"	Ø1/2"	Ø1/4"
NFE 050-040-125	5	100	5.5	3.15	1.89	24.80	9.84	12.40	4.33	6.30	4.72	15.75	12.40	0.71	2.03	0.55	17.52	5.51	Ø3/8"	Ø1/2"	Ø1/4"
NFE 060-050-125	6	125	5.5	3.94	1.89	25.20	11.02	13.98	4.33	7.87	5.91	19.69	15.75	0.87	2.03	0.55	17.91	5.51	Ø3/8"	Ø1/2"	Ø1/4"

FLANGE DIMENSIONS

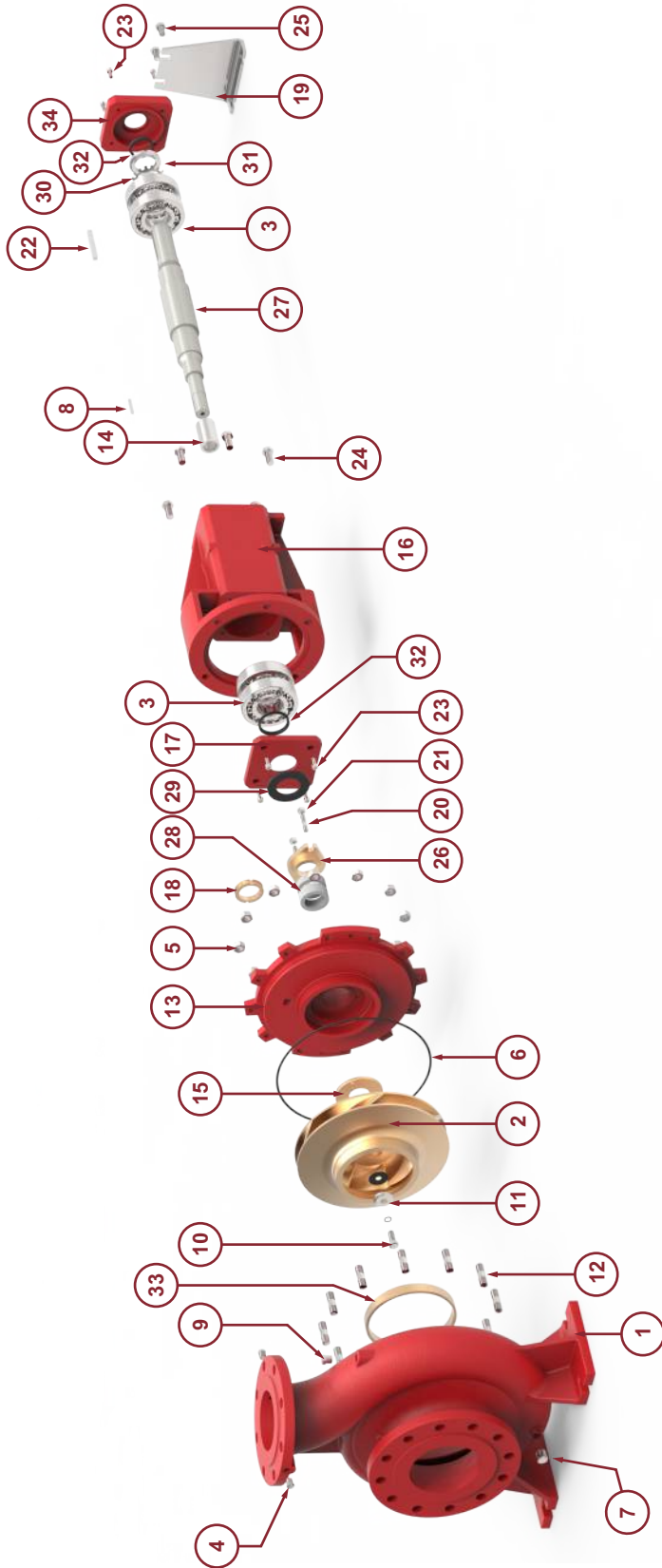


CLASS 300 FLANGE DIMENSIONS

Model	Suction				Discharge			
	ØA	ØB	ØC	ØD x Nos. of holes	ØA	ØB	ØC	ØD x Nos. of holes
NFE 025-015-100	7.48	5.87	4.92	Ø7/8" x 8	6.10	4.49	16.85	Ø7/8" x 4
NFE 030-025-100	8.27	6.61	5.67	Ø7/8" x 8	7.48	5.87	23.15	Ø7/8" x 8
NFE 050-040-100	11.02	9.25	8.31	Ø7/8" x 8	10.04	7.87	32.59	Ø7/8" x 8
NFE 050-040-125	11.02	9.25	8.31	Ø7/8" x 8	10.04	7.87	32.59	Ø7/8" x 8
NFE 060-050-125	12.60	10.63	9.69	Ø7/8" x 12	11.02	9.25	39.07	Ø7/8" x 8

END SUCTION FIRE PUMPS

EXPLODED VIEW



Part no.	Part name	Part no.	Part name	Part no.	Part name	Part no.	Part name
1	Casing	11	Impeller Washer	21	Hex Nut	31	Ring Nut
2	Impeller	12	Stud	22	Key	32	V-seal
3	Ball Bearing	13	Back Cover	23	Cap Screw	33	Wear Ring
4	Plug	14	Shaft Sleeve	24	Hex Bolt	34	Bearing Cover (DE)
5	Hex Nut	15	Gland Cover	25	Hex Bolt		
6	'O' Ring	16	Bearing Bracket	26	Gland		
7	Plug	17	Bearing Cover (NDE)	27	Shaft		
8	Key	18	Lentern Ring	28	Graphite Packing		
9	Plug	19	Foot	29	Water Thrower		
10	Hex Bolt	20	Stud	30	Locking Washer		

APPROVED FIRE PUMP MODELS WITH RATING

RATED CAPACITY- 50 US GPM

Sr. No.	Pump Model	UL Listed Pressure		FM Approved Pressure		Rated Speed (rpm)	Suction Inlet Dia. (inch)	Discharge Outlet Dia. (inch)	Stage(s)
		(psi)	(bar)	(psi)	(bar)				
1	NFE 025-015-100	96-130	6.61-8.96	96-130	6.61-8.96	2900	2.5	1.5	1
2	NFE 030-025-100	85-134	5.86-9.23	85-130	5.86-8.96	2900	3	2.5	1

RATED CAPACITY- 100 US GPM

Sr. No.	Pump Model	UL Listed Pressure		FM Approved Pressure		Rated Speed (rpm)	Suction Inlet Dia. (inch)	Discharge Outlet Dia. (inch)	Stage(s)
		(psi)	(bar)	(psi)	(bar)				
1	NFE 025-015-100	95-127	6.55-8.75	96-127	6.61-8.75	2900	2.5	1.5	1
2	NFE 120-100-200	84-134	5.79-9.23	84-129	5.79-8.89	2900	3	2.5	1

RATED CAPACITY- 150 US GPM

Sr. No.	Pump Model	UL Listed Pressure		FM Approved Pressure		Rated Speed (rpm)	Suction Inlet Dia. (inch)	Discharge Outlet Dia. (inch)	Stage(s)
		(psi)	(bar)	(psi)	(bar)				
1	NFE 030-025-100	83-135	5.72-9.30	83-129	5.72-8.89	2900	3	2.5	1

RATED CAPACITY- 200 US GPM

Sr. No.	Pump Model	UL Listed Pressure		FM Approved Pressure		Rated Speed (rpm)	Suction Inlet Dia. (inch)	Discharge Outlet Dia. (inch)	Stage(s)
		(psi)	(bar)	(psi)	(bar)				
1	NFE 030-025-100	81-135	5.58-9.90	81-129	5.58-8.89	2900	3	2.5	1

RATED CAPACITY- 250 US GPM

Sr. No.	Pump Model	UL Listed Pressure		FM Approved Pressure		Rated Speed (rpm)	Suction Inlet Dia. (inch)	Discharge Outlet Dia. (inch)	Stage(s)
		(psi)	(bar)	(psi)	(bar)				
1	NFE 030-025-100	78-134	5.37-9.23	77-129	5.30-8.89	2900	3	2.5	1

RATED CAPACITY- 300 US GPM

Sr. No.	Pump Model	UL Listed Pressure		FM Approved Pressure		Rated Speed (rpm)	Suction Inlet Dia. (inch)	Discharge Outlet Dia. (inch)	Stage(s)
		(psi)	(bar)	(psi)	(bar)				
1	NFE 050-040-100	94-132	6.48-9.10	94-132	6.48-9.10	2900	5	4	1

APPROVED FIRE PUMP MODELS WITH RATING

RATED CAPACITY- 400 US GPM

Sr. No.	Pump Model	UL Listed Pressure		FM Approved Pressure		Rated Speed (rpm)	Suction Inlet Dia. (inch)	Discharge Outlet Dia. (inch)	Stage(s)
		(psi)	(bar)	(psi)	(bar)				
1	NFE 050-040-100	93-131	6.41-9.03	93-131	6.41-9.03	2900	5	4	1
2	NFE 050-040-125	122-207	8.41-14.27	118-203	8.13-13.99	2900	5	4	1
3	NFE 060-050-125	111-192	7.65-13.23	107-195	7.37-13.55	2900	6	5	1

RATED CAPACITY- 450 US GPM

Sr. No.	Pump Model	UL Listed Pressure		FM Approved Pressure		Rated Speed (rpm)	Suction Inlet Dia. (inch)	Discharge Outlet Dia. (inch)	Stage(s)
		(psi)	(bar)	(psi)	(bar)				
1	NFE 050-040-100	92-131	6.34-9.03	93-131	6.41-9.03	2900	5	4	1
2	NFE 050-040-125	121-207	8.34-14.27	117-203	8.06-13.99	2900	5	4	1
3	NFE 060-050-125	110-192	7.58-13.23	107-195	7.37-13.44	2900	6	5	1

RATED CAPACITY- 500 US GPM

Sr. No.	Pump Model	UL Listed Pressure		FM Approved Pressure		Rated Speed (rpm)	Suction Inlet Dia. (inch)	Discharge Outlet Dia. (inch)	Stage(s)
		(psi)	(bar)	(psi)	(bar)				
1	NFE 050-040-100	91-130	6.27-8.96	91-130	6.27-8.96	2900	5	4	1
2	NFE 050-040-125	120-207	8.27-14.27	116-203	7.99-13.99	2900	5	4	1
3	NFE 060-050-125	110-192	7.58-13.23	106-194	7.30-13.37	2900	6	5	1

RATED CAPACITY- 750 US GPM

Sr. No.	Pump Model	UL Listed Pressure		FM Approved Pressure		Rated Speed (rpm)	Suction Inlet Dia. (inch)	Discharge Outlet Dia. (inch)	Stage(s)
		(psi)	(bar)	(psi)	(bar)				
1	NFE 050-040-100	86-125	5.92-8.61	85-125	5.86-8.61	2900	5	4	1
2	NFE 050-040-125	111-203	7.65-13.99	108-199	7.44-13.72	2900	5	4	1
3	NFE 060-050-125	109-190	7.51-13.1	104-194	7.17-13.37	2900	6	5	1

APPROVED FIRE PUMP MODELS WITH RATING

RATED CAPACITY- 1000 US GPM

Sr. No.	Pump Model	UL Listed Pressure		FM Approved Pressure		Rated Speed (rpm)	Suction Inlet Dia. (inch)	Discharge Outlet Dia. (inch)	Stage(s)
		(psi)	(bar)	(psi)	(bar)				
1	NFE 060-050-125	104-188	7.17-12.96	99-190	6.86-13.1	2900	6	5	1

HORIZONTAL SPLIT CASE QUICK SELECTION GUIDE

Rated Capacity in GPM / (LPM)	Pressure in PSI(Bar)	Electric & Diesel Engine Pump Model	Rated Pressure in Bar	Jockey Flow in USgpm	Jockey Pump Model	Electric Motor HP @ 2900 RPM	Diesel Engine HP @ 3000 RPM	Jockey Pump HP @ 2900 RPM
400(1514)	245-336 (16.89-23.16)	NFH 050-040-160	17	20	NV-C-055-18-X	200HP	191HP	10
			18	20	NV-C-055-18-X	200HP	191HP	10
			19	20	NV-C-055-20-X	200HP	217HP	10
			20	20	NV-C-055-20-X	200HP	217HP	10
			21	20	NV-C-055-22-X	200HP	249HP	10
			22	20	NV-C-055-22-X	250HP	249HP	10
			23	22.5	NV-C-095-17-X	250HP	275HP	20
450 (1703)	71-131 (4.89-9)	NFH 050-040-100	5	22.5	NV-C-027-08-X	40 HP	45HP	2
			6	22.5	NV-C-027-10-X	50 HP	60HP	3
			7	22.5	NV-C-027-10-X	60 HP	60HP	3
			8	22.5	NV-C-027-12-X	60 HP	71HP	3
			9	22.5	NV-C-027-14-X	75 HP	83HP	4
450 (1703)	244-335 (16.82-23.09)	NFH 050-040-160	17	22.5	NV-C-055-18-X	200HP	191HP	10
			18	22.5	NV-C-055-20-X	200HP	217HP	10
			19	22.5	NV-C-055-20-X	200HP	217HP	10
			20	22.5	NV-C-055-22-X	200HP	249HP	10
			21	22.5	NV-C-055-22-X	250HP	249HP	10
			22	22	NV-C-055-22-X	250HP	275HP	10
500 (1892)	71-131 (4.89-9)	NFH 050-040-100	5	25	NV-C-027-08-X	40 HP	45HP	2
			6	25	NV-C-027-10-X	50 HP	60HP	3
			7	25	NV-C-027-12-X	60 HP	71HP	3
			8	25	NV-C-027-14-X	75 HP	83HP	4
			9	25	NV-C-027-14-X	75 HP	83HP	4
500 (1892)	131-214 (9-14.75)	NFH 060-050-125	9	25	NV-C-027-14-X	100 HP	115HP	4
			10	22.3	NV-C-055-10-X	125 HP	145HP	5.5
			11	25	NV-C-055-12-X	125 HP	145HP	5.5
			12	25	NV-C-055-14-X	150 HP	175HP	7.5
			13	25	NV-C-055-14-X	150 HP	175HP	7.5
			14	22.3	NV-C-055-14-X	200 HP	216HP	7.5
			14.75	25	NV-C-055-16-X	200 HP	216HP	7.5

HORIZONTAL SPLIT CASE QUICK SELECTION GUIDE

Rated Capacity in GPM / (LPM)	Pressure in PSI(Bar)	Electric & Diesel Engine Pump Model	Rated Pressure in Bar	Jockey Flow in USgpm	Jockey Pump Model	Electric Motor HP @ 2900 RPM	Diesel Engine HP @ 3000 RPM	Jockey Pump HP @ 2900 RPM
500 (1893)	243-334 (16.75-23.02)	NFH 050-040-160	17	25	NV-C-055-18-X	200HP	217HP	10
			18	25	NV-C-055-20-X	200HP	217HP	10
			19	25	NV-C-055-20-X	200HP	249HP	10
			20	25	NV-C-055-22-X	250HP	249HP	10
			21	25	NV-C-055-22-X	250HP	249HP	10
			22	25	NV-C-095-17-X	250HP	275HP	20
750(2839)	65-130 (4.4-8.96)	NFH 050-040-160	5	37.5	NV-C-055-06-X	50 HP	60HP	3
			6	37.5	NV-C-055-07-X	60 HP	71HP	4
			7	37.5	NV-C-055-08-X	75 HP	83HP	4
			8	37.5	NV-C-055-10-X	100 HP	115HP	5.5
			8.96	37.5	NV-C-055-12-X	100 HP	115HP	5.5
750(2839)	129-213 (8.8-14.68)	NFH 050-040-160	9	37.5	NV-C-055-12-X	125 HP	145HP	5.5
			10	37.5	NV-C-055-12-X	125 HP	145HP	5.5
			11	37.5	NV-C-055-14-X	150 HP	175HP	7.5
			12	37.5	NV-C-055-14-X	200 HP	216HP	7.5
			13	37.5	NV-C-055-16-X	200 HP	216HP	7.5
			14	37.5	NV-C-055-16-X	200 HP	216HP	7.5
			14.68	37.5	NV-C-055-18-X	200 HP	275HP	10
750 (2839)	236-323 (16.27-22.27)	NFH 050-040-160	16.5	37.5	NV-C-055-20-X	250HP	249HP	10
			17	37.5	NV-C-055-20-X	250HP	249HP	10
			18	37.5	NV-C-055-22-X	250HP	275HP	10
			19	37.5	NV-C-055-22-X	250HP	275HP	10
			20	37.5	NV-C-095-17-X	250HP	300HP	20
750 (2839)	141-201 (9.73-13.85)	NFH 050-040-160	9.73	37.5	NV-C-055-12-X	125HP	145HP	5.5
			10	37.5	NV-C-055-12-X	125HP	175HP	5.5
			11	37.5	NV-C-055-14-X	150HP	175HP	7.5
			12	37.5	NV-C-055-14-X	200HP	193HP	7.5
			13	37.5	NV-C-055-16-X	200HP	216HP	7.5
			13.85	37.5	NV-C-055-16-X	200HP	216HP	7.5
1000(3785)	80-142 (5.51- 9.7)	NFH 050-040-160	6	50	NV-C-095-05-X	100 HP	115HP	5.5
			7	50	NV-C-095-06-X	125 HP	145HP	7.5
			8	50	NV-C-095-07-X	150 HP	175HP	7.5

HORIZONTAL SPLIT CASE QUICK SELECTION GUIDE

Rated Capacity in GPM / (LPM)	Pressure in PSI(Bar)	Electric & Diesel Engine Pump Model	Rated Pressure in Bar	Jockey Flow in USgpm	Jockey Pump Model	Electric Motor HP @ 2900 RPM	Diesel Engine HP @ 3000 RPM	Jockey Pump HP @ 2900 RPM
1000(3785)	127-210 (8.75-14.4)	NFH 050-040-160	9	50	NV-C-095-08-X	150 HP	175HP	10
			10	50	NV-C-095-08-X	150 HP	175HP	10
			11	50	NV-C-095-09-X	200 HP	216HP	10
			12	50	NV-C-095-10-X	200 HP	216HP	15
			13	50	NV-C-095-12-X	200 HP	275HP	15
			14	50	NV-C-095-12-X	250 HP	275HP	15
1000(3785)	141-201 (9.73-13.85)	NFH 050-040-160	9.73	50	NV-C-055-14-X	150 HP	175HP	7.5
			10	50	NV-C-055-16-X	150 HP	175HP	7.5
			11	50	NV-C-055-16-X	200 HP	193HP	7.5
			12	50	NV-C-055-18-X	200 HP	216HP	10
			13	50	NV-C-055-20-X	200 HP	253HP	10
			13.85	50	NV-C-055-20-X	250 HP	253HP	10
1250(4732)	78-140 (5.3- 9.6)	NFH 050-040-160	5.5	60	NV-C-095-05-X	100 HP	115HP	5.5
			6	60	NV-C-095-05-X	100 HP	115HP	5.5
			7	60	NV-C-095-06-X	125 HP	145HP	7.5
			8	60	NV-C-095-07-X	150 HP	175HP	7.5
1250(4732)	121-205 (8.34-14.13)	NFH 050-040-160	9	60	NV-C-095-08-X	150 HP	175HP	10
			10	60	NV-C-095-09-X	200 HP	216HP	10
			11	60	NV-C-095-09-X	200 HP	216HP	10
			12	60	NV-C-095-10-X	200 HP	275HP	15
			13	60	NV-C-095-12-X	250 HP	275HP	15
1250(4732)	137-198 (9.45-13.72)	NFH 050-040-160	9.45	60	NV-C-095-08-X	150 HP	175HP	10
			10	60	NV-C-095-09-X	200 HP	193HP	10
			11	60	NV-C-095-10-X	200 HP	216HP	15
			12	60	NV-C-095-10-X	200 HP	253HP	15
			13	60	NV-C-095-12-X	250 HP	253HP	15
			13.72	60	NV-C-095-12-X	250 HP	275HP	15
1500(5678)	75-139 (8.34-14.13)	NFH 050-040-160	5.5	75	NV-C-095-05-X	100 HP	115HP	5.5
			6	75	NV-C-095-06-X	125 HP	145HP	7.5
			7	75	NV-C-095-07-X	150 HP	175HP	7.5
			8	75	NV-C-095-08-X	200 HP	216HP	10
			9	75	NV-C-095-09-X	200 HP	216HP	10

HORIZONTAL SPLIT CASE QUICK SELECTION GUIDE

Rated Capacity in GPM / (LPM)	Pressure in PSI(Bar)	Electric & Diesel Engine Pump Model	Rated Pressure in Bar	Jockey Flow in USgpm	Jockey Pump Model	Electric Motor HP @ 2900 RPM	Diesel Engine HP @ 3000 RPM	Jockey Pump HP @ 2900 RPM
1500(5678)	113-210 (7.8-14.48)	NFH 100-080-125	10	75	NV-C-095-10-X	300HP	330HP	15
			11	75	NV-C-095-10-X	350HP	330HP	15
			12	75	NV-C-095-12-X	400HP	360HP	15
	135-203 (7.79-13.99)	NFH 100-080-160	13	75	NV-C-095-12-X	400HP	490HP	15
			13.99	75	NV-C-095-14-X	450HP	490HP	15
1500(5678)	184-245 (12.68-16.89)	NFH 100-080-255	15	75	NV-C-095-14-X	400HP	450HP	15
			16	75	NV-C-095-17-X	450HP	522HP	20
1500(5678)	130-194 (8.96-13.40)	NFH 080-060-120	8.96	75	NV-C-095-09-X	200HP	193HP	10
			9	75	NV-C-095-09-X	200HP	193HP	10
			10	75	NV-C-095-10-X	200HP	216HP	15
			11	75	NV-C-095-10-X	200HP	253HP	15
			12	75	NV-C-095-12-X	250HP	253HP	15
			13	75	NV-C-095-12-X	250HP	275HP	15
			13.40	75	NV-C-095-14-X	250HP	275HP	15
2000(7571)	80-133 (5.5-9.17)	NFH 100-080-100	6	100	NV-C-110-06-X	200 HP	217HP	10
			7	100	NV-C-110-07-X	200 HP	249HP	10
	80-133 (5.5-9.17)	NFH 100-080-100	8	100	NV-C-110-08-X	250 HP	330HP	15
			9	100	NV-C-0110-08-X	300 HP	330HP	15
2000(7571)	109-209 (7.5 - 14.41)	NFH 100-080-125	10	100	NV-C-110-10-X	350HP	330HP	15
			11	100	NV-C-110-12-X	350HP	360HP	20
	131-202 (9.0 - 13.92)	NFH 100-080-160	12	100	NV-C-110-12-X	400HP	490HP	20
			13	100	NV-C-110-12-X	450HP	490HP	20
2000(7571)	180-242 (12.41-16.68)	NFH 100-080-255	13.9	100	NV-C-110-14-X	450HP	490HP	20
	131-202 (9.0-13.92)	NFH 100-080-160						
	180-242 (12.41-16.68)	NFH 100-080-255	15	100	NV-C-110-14-X	450HP	522HP	20

HORIZONTAL SPLIT CASE QUICK SELECTION GUIDE

Rated Capacity in GPM / (LPM)	Pressure in PSI(Bar)	Electric & Diesel Engine Pump Model	Rated Pressure in Bar	Jockey Flow in USgpm	Jockey Pump Model	Electric Motor HP @ 2900 RPM	Diesel Engine HP @ 3000 RPM	Jockey Pump HP @ 2900 RPM
2000(7571)	140-200 (9.66-13.79)	NFH 100-080-120	9.66	75	NV-C-110-10-X	250HP	275HP	15
			10	75	NV-C-110-10-X	250HP	300HP	15
			11	75	NV-C-110-12-X	300HP	-	20
			12	75	NV-C-110-12-X	300HP	-	20
			13	75	NV-C-110-12-X	350HP	-	20
			13.79	75	NV-C-110-14-X	350HP	-	20
2500(9464)	93-152 (6.41-10.48)	NFH 120-100-200	6.5	125	NV-C-140-05-2	250HP	240HP	15
			7	125	NV-C-140-05-2	250HP	300HP	15
			8	125	NV-C-140-06-2	300HP	385HP	15
	93-152 (6.41-10.48)	NFH 120-100-200	9	125	NV-C-140-06-X	350HP	330HP	15
126-199 (8.68-13.72)	NFH 100-080-160	10	125	NV-C-140-07-2	400HP	490HP	20	
2500(9464)	152-224 (10.48 - 15.44)	NFH 120-100-255	11	125	NV-C-140-08-2	400HP	490HP	20
	126-199 (8.68 - 13.72)	NFH 100-080-160	12	125	NV-C-140-08-X	450HP	490HP	20
3000(11356)	90-151 (6.2-10.41)	NFH 120-100-200	6.5	150	NV-C-140-05-X	250HP	300HP	15
			7	150	NV-C-140-06-2	300HP	300HP	15
			8	150	NV-C-140-07-2	350HP	385HP	20
			9	150	NV-C-140-07-X	400HP	450HP	20
			10	150	NV-C-140-08-X	450HP	522HP	20

END SUCTION QUICK SELECTION GUIDE

Rated Capacity in GPM / (LPM)	Pressure in PSI(Bar)	Electric & Diesel Engine Pump Model	Rated Pressure in Bar	Jockey Flow in USgpm	Jockey Pump Model	Electric Motor HP @ 2900 RPM	Diesel Engine HP @ 3000 RPM	Jockey Pump HP @ 2900 RPM
50(189)	96-130 (6.61- 8.96)	NFE 025-015-100	6.7	2.50	NV-C-005-15-X	15HP	15 HP	0.75
			7	2.50	NV-C-005-15-X	15HP	15 HP	0.75
			8	2.50	NV-C-005-17-X	15HP	15 HP	0.75
			8.95	2.50	NV-C-005-19-X	15HP	20 HP	0.75
	85-134 (5.86- 9.23)	NFE 030-025-100	6	2.50	NV-C-005-13-X	15HP	15 HP	0.5
			9.2	2.50	NV-C-005-19-X	20HP	30 HP	0.75
100(378)	95-127 (6.55- 8.75)	NFE 025-015-100	6.6	5.00	NV-C-010-12-X	15HP	15 HP	1
			7	5.00	NV-C-010-13-X	15HP	20 HP	1
			8	5.00	NV-C-010-15-X	20 HP	20 HP	1
			8.75	5.00	NV-C-010-17-X	20 HP	30 HP	1.5
	84-134 (5.79- 9.23)	NFE 030-025-100	6	5.00	NV-C-010-11-X	15HP	15 HP	0.75
			9.2	5.00	NV-C-010-17-X	25 HP	30 HP	1.5
150(567)	83-135 (5.12- 9.30)	NFE 030-025-100	6	7.50	NV-C-010-13-X	15HP	20 HP	1
			7	7.50	NV-C-010-15-X	20 HP	30 HP	1
			8	7.50	NV-C-012-11-X	25 HP	30 HP	1.5
			9	7.50	NV-C-012-13-X	30HP	30 HP	2
			9.3	7.50	NV-C-012-13-X	30HP	57 HP	2

END SUCTION QUICK SELECTION GUIDE

Rated Capacity in GPM / (LPM)	Pressure in PSI(Bar)	Electric & Diesel Engine Pump Model	Rated Pressure in Bar	Jockey Flow in USgpm	Jockey Pump Model	Electric Motor HP @ 2900 RPM	Diesel Engine HP @ 3000 RPM	Jockey Pump HP @ 2900 RPM
200 (757)	81-135 (5.58-9.30)	NFE 030-025-100	5.8	10.00	NV-C-016-11-X	20 HP	20 HP	1.5
			6	10.00	NV-C-016-11-X	20 HP	30 HP	1.5
			7	10.00	NV-C-016-13-X	25 HP	30 HP	1.5
			8	10.00	NV-C-016-15-X	30 HP	30 HP	1.5
			9	10.00	NV-C-016-17-X	30 HP	57 HP	2
			9.3	10.00	NV-C-016-17-X	40 HP	57 HP	2
250(946)	78-134 (5.37-9.23)	NFE 030-025-100	5.5	12.50	NV-C-016-12-X	20 HP	30 HP	1.5
			6	12.50	NV-C-016-13-X	25 HP	30 HP	1.5
			7	12.50	NV-C-016-15-X	30 HP	30 HP	1.5
			8	12.50	NV-C-016-17-X	30 HP	57 HP	2
			9	12.50	NV-C-016-19-X	40 HP	57 HP	2
300(1135)	94-132 (6.48-9.10)	NFE 050-040-100	6.65	15.00	NV-C-016-17-X	40 HP	57 HP	2
			7	15.00	NV-C-016-17-X	50 HP	57 HP	2
			8	15.00	NV-C-027-10-X	50 HP	57 HP	3
			9	15.00	NV-C-027-12-X	60 HP	71 HP	3

END SUCTION QUICK SELECTION GUIDE

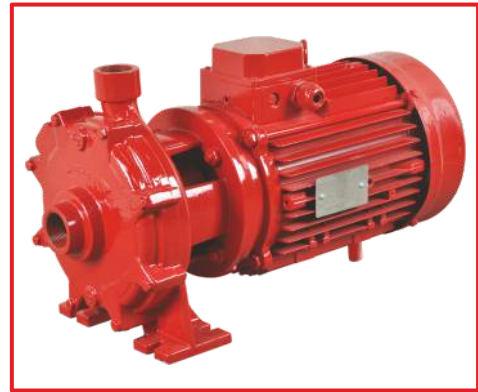
Rated Capacity in GPM / (LPM)	Pressure in PSI(Bar)	Electric & Diesel Engine Pump Model	Rated Pressure in Bar	Jockey Flow in USgpm	Jockey Pump Model	Electric Motor HP @ 2900 RPM	Diesel Engine HP @ 3000 RPM	Jockey Pump HP @ 2900 RPM
400(1514)	93-131 (6.41 - 9.03)	NFE 050-040-100	6.55	20.00	NV-C-027-10-X	50 HP	57 HP	3
			7	20.00	NV-C-027-10-X	50 HP	57 HP	3
			8	20.00	NV-C-027-12-X	60 HP	71 HP	3
			9	20.00	NV-C-027-12-X	75 HP	71 HP	3
	122-207 (8.41 - 14.27)	NFE 050-040-125	10	20.00	NV-C-027-14-X	75 HP	83 HP	4
			11	20.00	NV-C-027-16-X	100 HP	115 HP	4
			12	20.00	NV-C-027-16-X	100 HP	115 HP	4
			13	20.00	NV-A-027-19-X	100 HP	115 HP	5.5
			14	20.00	NV-A-027-19-X	100 HP	115 HP	5.5
450(1703)	92-131 (6.34 - 9.03)	NFE 050-040-100	6.5	22.50	NV-C-027-10-X	50 HP	57 HP	3
			7	22.50	NV-C-027-10-X	50 HP	57 HP	3
			8	22.50	NV-C-027-12-X	60 HP	71 HP	3
			9	22.50	NV-C-027-14-X	75 HP	83 HP	4
	121-207 (8.34 - 14.27)	NFE 050-040-125	10	22.50	NV-C-027-14-X	75 HP	83 HP	4
			11	22.50	NV-C-027-16-X	100 HP	115 HP	4
			12	22.50	NV-A-027-19-X	100 HP	115 HP	5.5
			13	22.50	NV-A-027-19-X	100 HP	115 HP	5.5
			14	22.50	NV-C-027-22-X	125 HP	145 HP	5.5

END SUCTION QUICK SELECTION GUIDE

Rated Capacity in GPM / (LPM)	Pressure in PSI(Bar)	Electric & Diesel Engine Pump Model	Rated Pressure in Bar	Jockey Flow in USgpm	Jockey Pump Model	Electric Motor HP @ 2900 RPM	Diesel Engine HP @ 3000 RPM	Jockey Pump HP @ 2900 RPM
500(1892)	91-130 (6.21 - 8.96)	NFE 050-040-100	6.5	25.00	NV-C-027-10-X	50 HP	57 HP	3
			7	25.00	NV-C-027-12-X	60 HP	71 HP	3
			8	25.00	NV-C-027-14-X	60 HP	71 HP	4
			8.96	25.00	NV-C-027-14-X	75 HP	83 HP	4
	120-207 (8.27 - 14.27)	NFE 050-040-125	10	22.00	NV-C-055-10-X	100 HP	115 HP	5.5
			11	25.00	NV-C-055-12-X	100 HP	115 HP	5.5
			12	25.00	NV-C-055-14-X	100 HP	115 HP	7.5
			13	25.00	NV-C-055-14-X	125 HP	145 HP	7.5
			14	22.00	NV-C-055-14-X	125 HP	145 HP	7.5
	750(2838)	86-125 (5.92 - 8.61)	NFE 050-040-100	6	37.50	NV-C-055-07-X	60 HP	71 HP
7				37.50	NV-C-055-08-X	75 HP	83 HP	4
8				37.50	NV-C-055-10-X	100 HP	115 HP	5.5
8.6				37.50	NV-C-055-10-X	100 HP	115 HP	5.5
114-203 (7.65 - 13.99)		NFE 050-040-125	9	37.50	NV-C-055-12-X	100 HP	115 HP	5.5
			10	37.50	NV-C-055-12-X	100 HP	115 HP	5.5
			11	37.50	NV-C-055-14-X	125 HP	145 HP	7.5
			12	37.50	NV-C-055-14-X	125 HP	145 HP	7.5
			13	37.50	NV-C-055-16-X	150 HP	175 HP	7.5
			13.99	37.50	NV-C-055-16-X	150 HP	175 HP	7.5

END SUCTION QUICK SELECTION GUIDE

Rated Capacity in GPM / (LPM)	Pressure in PSI(Bar)	Electric & Diesel Engine Pump Model	Rated Pressure in Bar	Jockey Flow in USgpm	Jockey Pump Model	Electric Motor HP @ 2900 RPM	Diesel Engine HP @ 3000 RPM	Jockey Pump HP @ 2900 RPM
1000 (3785)	104-188 (7.17 - 12.96)	NFE 060-050-125	7.3	50.00	NV-C-095-06-X	100 HP	115 HP	7.5
			8	50.00	NV-C-095-07-X	125 HP	145 HP	7.5
			9	50.00	NV-C-095-08-X	125 HP	145 HP	10
			10	50.00	NV-C-095-08-X	150 HP	175 HP	10
			11	50.00	NV-C-095-09-X	200 HP	216 HP	10
			12	50.00	NV-C-095-10-X	200 HP	216 HP	15
			12.96	50.00	NV-C-095-12-X	200HP	216 HP	15



Introduction

- ▶ Jockey Pump are small, motor driven pumps used in conjunction with main fire pumps to compensate for minor leaks in the fire protection system and automatically maintain stand-by pressure. This reduces wear on the main pump and controller caused by unnecessary, frequent operation. Jockey Pump controllers are available for across-the-line starting.
- ▶ Occasionally in a Fire Pump system, water leakage will occur at flanged or threaded pipe connections, valve stems, stuffing boxes, etc. This normal loss of water will lower the system pressure gradually until the main Fire pump is required to start. To minimize wear on the Fire Pump resulting from unnecessary operation, a Jockey Pump is recommended for the system. In a Jockey Pump system a small pump, motor and Controller / pressure switch unit is installed in the piping system.
- ▶ When the water pressure drops below the pre-set level, the pressure switch energizes a starter which activates the Jockey Pump. Correct water pressure is therefore maintained at all times. An optional minimum run timer will prevent the Jockey Pump from being started too frequently. This timer will ensure operation for a minimum of 2 minutes. If a fire should start, the pressure will continue to drop and the main Fire Pump will start. Automatic controllers also include a "Hand-off Automatic" selector switch for manual operation.

JOCKEY PUMPS SUMMARY TABLE FOR HORIZONTAL SPLIT CASE FIRE PUMPS

Rated Capacity in GPM / (LPM)	Pressure in PSI(Bar)	Electric & Diesel Engine Pump Model	Rated Pressure in Bar	Jockey Flow in USgpm	Jockey Pump Model	Jockey Pump HP	RPM
400 (1514)	245-336 (16.89- 23.16)	NFH 050-040-160	17	20	NV-C-055-18-X	10	2900
			18	20	NV-C-055-18-X	10	2900
			19	20	NV-C-055-20-X	10	2900
			20	20	NV-C-055-20-X	10	2900
			21	20	NV-C-055-22-X	10	2900
			22	20	NV-C-055-22-X	10	2900
			23	22.5	NV-C-095-17-X	20	2900
450 (1703)	71-131 (4.89-9)	NFH 050-040-100	5	22.5	NV-C-027-08-X	2	2900
			6	22.5	NV-C-027-10-X	3	2900
			7	22.5	NV-C-027-10-X	3	2900
			8	22.5	NV-C-027-12-X	3	2900
			9	22.5	NV-C-027-14-X	4	2900
450 (1703)	244-335 (16.82- 23.09)	NFH 050-040-160	17	22.5	NV-C-055-18-X	10	2900
			18	22.5	NV-C-055-20-X	10	2900
			19	22.5	NV-C-055-20-X	10	2900
			20	22.5	NV-C-055-22-X	10	2900
			21	22.5	NV-C-055-22-X	10	2900
			22	22	NV-C-055-22-X	10	2900
500 (1892)	71-131 (4.89-9)	NFH 050-040-100	5	25	NV-C-027-08-X	2	2900
			6	25	NV-C-027-10-X	3	2900
			7	25	NV-C-027-12-X	3	2900
			8	25	NV-C-027-14-X	4	2900
			9	25	NV-C-027-14-X	4	2900
500 (1892)	131-214 (9-14.75)	NFH 060-050-125	9	25	NV-C-027-14-X	4	2900
			10	22.3	NV-C-055-10-X	5.5	2900
			11	25	NV-C-055-12-X	5.5	2900
			12	25	NV-C-055-14-X	7.5	2900
			13	25	NV-C-055-14-X	7.5	2900
			14	22.3	NV-C-055-14-X	7.5	2900
			14.75	25	NV-C-055-16-X	7.5	2900

JOCKEY PUMPS SUMMARY TABLE FOR HORIZONTAL SPLIT CASE FIRE PUMPS

Rated Capacity in GPM / (LPM)	Pressure in PSI(Bar)	Electric & Diesel Engine Pump Model	Rated Pressure in Bar	Jockey Flow in USgpm	Jockey Pump Model	Jockey Pump HP	RPM
500 (1892)	243-334 (16.75-23.02)	NFH 050-040-160	17	25	NV-C-055-18-X	10	2900
			18	25	NV-C-055-20-X	10	2900
			19	25	NV-C-055-20-X	10	2900
			20	25	NV-C-055-22-X	10	2900
			21	25	NV-C-055-22-X	10	2900
			22	25	NV-C-095-17-X	20	2900
750 (2838)	65-130 (4.4-8.96)	NFH 050-040-100	5	37.5	NV-C-055-06-X	3	2900
			6	37.5	NV-C-055-07-X	4	2900
			7	37.5	NV-C-055-08-X	4	2900
			8	37.5	NV-C-055-10-X	5.5	2900
			8.96	37.5	NV-C-055-12-X	5.5	2900
750 (2838)	129-213 (8.8-14.68)	NFH 060-050-125	9	37.5	NV-C-055-12-X	5.5	2900
			10	37.5	NV-C-055-12-X	5.5	2900
			11	37.5	NV-C-055-14-X	7.5	2900
			12	37.5	NV-C-055-14-X	7.5	2900
			13	37.5	NV-C-055-16-X	7.5	2900
			14	37.5	NV-C-055-16-X	7.5	2900
			14.68	37.5	NV-C-055-18-X	10	2900
750 (2838)	236-323 (16.27-22.27)	NFH 050-040-160	16.5	37.5	NV-C-055-20-X	10	2900
			17	37.5	NV-C-055-20-X	10	2900
			18	37.5	NV-C-055-22-X	10	2900
			19	37.5	NV-C-055-22-X	10	2900
			20	37.5	NV-C-095-17-X	20	2900
1000 (3785)	80-142 (5.51- 9.7)	NFH 080-060-100	6	50	NV-C-095-05-X	5.5	2900
			7	50	NV-C-095-06-X	7.5	2900
			8	50	NV-C-095-07-X	7.5	2900
1000 (3785)	127-210 (8.75-14.4)	NFH 060-050-125	9	50	NV-C-095-08-X	10	2900
			10	50	NV-C-095-08-X	10	2900
			11	50	NV-C-095-09-X	10	2900
			12	50	NV-C-095-10-X	15	2900
			13	50	NV-C-095-12-X	15	2900
			14	50	NV-C-095-12-X	15	2900

JOCKEY PUMPS SUMMARY TABLE FOR HORIZONTAL SPLIT CASE FIRE PUMPS

Rated Capacity in GPM / (LPM)	Pressure in PSI(Bar)	Electric & Diesel Engine Pump Model	Rated Pressure in Bar	Jockey Flow in USgpm	Jockey Pump Model	Jockey Pump HP	RPM
1250 (4732)	78-140 (5.3- 9.6)	NFH 080-060-100	5.5	60	NV-C-095-05-X	5.5	2900
			6	60	NV-C-095-05-X	5.5	2900
			7	60	NV-C-095-06-X	7.5	2900
			8	60	NV-C-095-07-X	7.5	2900
1250 (4732)	121-205 (8.34- 14.13)	NFH 060-050-125	9	60	NV-C-095-08-X	3	2900
			10	60	NV-C-095-09-X	4	2900
			11	60	NV-C-095-09-X	4	2900
			12	60	NV-C-095-10-X	5.5	2900
			13	60	NV-C-095-12-X	5.5	2900
1500 (5678)	75-139 (8.34-14.13)	NFH 080-060-100	5.5	75	NV-C-095-05-X	5.5	2900
			6	75	NV-C-095-06-X	7.5	2900
			7	75	NV-C-095-07-X	7.5	2900
			8	75	NV-C-095-08-X	10	2900
			9	75	NV-C-095-09-X	10	2900
1500 (5678)	113-210 (7.8- 14.48)	NFH 100-080-125	10	75	NV-C-095-10-X	15	2900
			11	75	NV-C-095-10-X	15	2900
			12	75	NV-C-095-12-X	15	2900
	135-203 (7.79- 13.99)	NFH 100-080-160	13	75	NV-C-095-12-X	15	2900
			13.99	75	NV-C-095-14-X	15	2900
1500 (5678)	184-245 (12.68- 16.89)	NFH 100-080-255	15	75	NV-C-095-14-X	15	2900
			16	75	NV-C-095-17-X	20	2900
2000 (7571)	80-133 (5.5-9.17)	NFH 100-080-100	6	100	NV-C-110-06-X	10	2900
			7	100	NV-C-110-07-X	10	2900
	131-202 (4.96- 9.17)	NFH 100-080-125	8	100	NV-C-110-08-X	15	2900
			9	100	NV-C-110-10-X	15	2900
2000 (7571)	109-209 (7.5 - 14.41)	NFH 100-080-255	10	100	NV-C-110-10-X	15	2900
			11	100	NV-C-110-12-X	20	2900
	131-202 (9.0 - 13.92)	NFH 100-080-160	12	100	NV-C-110-12-X	20	2900
			13	100	NV-C-110-12-X	20	2900

JOCKEY PUMPS SUMMARY TABLE FOR HORIZONTAL SPLIT CASE FIRE PUMPS

Rated Capacity in GPM / (LPM)	Pressure in PSI(Bar)	Electric & Diesel Engine Pump Model	Rated Pressure in Bar	Jockey Flow in USGpm	Jockey Pump Model	Jockey Pump HP	RPM
2000 (7571)	180-242 (12.41-16.68)	NFH 100-080-255	13.9	100	NV-C-110-14-X	20	2900
	131-202 (9.0 - 13.92)	NFH 100-080-160					
2000(7571)	180-242 (12.41-16.68)	NFH 100-080-255	15	100	NV-C-110-14-X	20	2900
2500(5678)	93-152 (6.41-10.48)	NFH 120-100-200	6.5	125	NV-C-140-05-2	15	2900
			7	125	NV-C-140-05-2	15	2900
			8	125	NV-C-140-06-2	15	2900
2500 (5678)	93-152 (6.41-10.48)	NFH 120-100-200	9	125	NV-C-140-06-X	15	2900
	126-199 (8.68-13.72)	NFH 100-080-160	10	125	NV-C-140-07-2	20	2900
2500 (5678)	152-224 (10.48-15.44)	NFH 120-100-255	11	125	NV-C-140-08-2	20	2900
	126-199 (8.68-13.72)	NFH 100-080-160	12	125	NV-C-140-08-X	20	2900
3000 (11356)	90-151 (6.2-10.41)	NFH 120-100-200	6.5	150	NV-C-140-05-X	15	2900
			7	150	NV-C-140-06-2	15	2900
			8	150	NV-C-140-07-2	20	2900
			9	150	NV-C-140-07-X	20	2900
			10	150	NV-C-140-08-X	20	2900



Northam Inc.

995/C Griffin Pond Road, Clarks Summit, PA 18411, USA
Phone : +1-570-659-7200, Email : sales@northam-inc.com

Product Improvement and changes are a continuous process at 'Northam'. The data given in this publication is therefore subject to revision.